

# 浙江路桥经济开发区

Zhejiang Luqiao Economic Development Zone

▶ 全域高质量发展的重要载体

An important carrier of global high-quality development

▶ 抢抓湾区发展先机的重要平台

An important platform for seizing the first opportunity for the development of the Bay area

▶ 提升区域开放水平的必由路径

The necessary way to improve the opening level of the region

▶ 产城融合推动转型的现实所需

The realistic need of the integration of production and city to promote the transformation

**全面接轨大上海 深度融入长三角**

Fully integrate with Greater Shanghai  
Deeply integrated into the Yangtze River Delta

地 址：浙江省台州市路桥区腾达路 1008 号

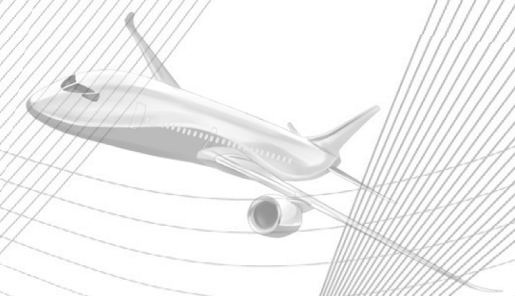
招商热线：0576-82410171

传 真：0576-82460011

Address: 1008 Tengda road, Luqiao district, Taizhou, Zhejiang province

Investment hotline: 0576-82410171

Fax: 0576-82460011



# 目录

Catalogue



## 第一章：活力路桥

Chapter 1: Dynamic Luqiao

- 千年商都 Millennium commercial city
- 经济规模 Economic scale
- 产业格局 Industrial pattern
- 交通体系 Traffic system
- 生态环境 Ecological environment



## 第四章：重点招引

Chapter 4: Key attraction

- 产业招引 Industrial attraction
  - 新能源汽车产业
  - 智能装备产业
  - 智能家居产业
  - 金属资源再生产业
  - 汽摩配产业
  - 智能机电产业
  - 通用设备制造业
  - 卫浴产业
  - 智慧社区管理产业
- 项目招引 Project attraction
  - 小镇田园综合体项目
  - 机电产业园项目
  - 汽车零部件强链补链产业园项目
  - 科创产业园项目



## 第二章：开发区概况

Chapter 2: General situation of development zones

- 区域规划 Regional planning
- 发展目标 Development goal
- 产业定位 Industry orientation
- 区块简介 Block introduction
- 重点项目 Key project



## 第三章：创业热土

Chapter 3: Hot land of entrepreneurship

- 政府服务 Government service
- 要素支撑 Factor support
- 科技活力 Scientific and technological vitality
- 人才战略 Talent strategy
- 公共服务 Public service

第一章

活力路桥

Chapter 1

Dynamic Luqiao

01

活力路桥



# 千年商都

Millennium  
commercial city



路桥是组成台州市中心城市的三区之一。位于浙江沿海中东部，内陆总面积 274 平方公里，户籍人口 46.1 万，常住人口 62.8 万。全区背山面海，河道纵横，浅海滩涂宽广辽阔，面积达 21.3 平方公里。

内陆总面积  
**274**  
平方公里

户籍人口  
**46.1**  
万

常住人口  
**62.8**  
万

Luqiao is one of the three districts that make up the central city of Taizhou. It is located in the central and eastern part of the coast of Zhejiang, with a total inland area of 274square kilometers, a registered population of 461000 and a resident population of 628000. The whole region faces the sea, the river is vertical and horizontal, and the shallow tidal flat is broad and vast, covering an area of 21.3 square kilometers.



十里长街

## 城市名片：

- 全国绿色发展百强区
- 全国科技创新百强区
- 全国新型城镇化质量百强区

## City business card:

- Top 100 green development areas in China
- National top 100 areas of scientific and technological innovation
- The top 100 areas of new urbanization quality in China.

地处台州核心腹地的路桥，是连接台州东、西、南、北的交通枢纽，自古以来就有“百路千桥万家市”之美誉。路桥拥有跨越千年的商贸文化传承，是台州市内市场经济最为发达、商品交易最为活跃、人民生活最为富裕的地区之一。

Located in the core hinterland of Taizhou, Luqiao is a transportation hub connecting the East, West, North and south of Taizhou. Since ancient times, it has been known as a place with "a Hundred roads, Thousands of bridges, and Ten thousands of Markets". Luqiao is one of the most developed market economy, where most active commodity trades are taking place and people enjoys the highest standard of living in Taizhou.

当下的路桥，大力发扬“敢闯敢拼、勇争第一”的时代精神，走深走实市委、市政府“三立三进三突围”的战略路径，加快融入省、市发展大局，打造民营经济高质量发展强区，争当台州市“突围闯将、发展先锋”。

Today's Luqiao is striving to "forge ahead with full steam to be the vanguard". By fully implementing and following the strategic path set by the municipal Party committee and the municipal government to "Three Establish, Three Advance, and Three Break Through", Luqiao aims to accelerate its integration into the provincial and municipality, creates a stronghold of high-quality private economy, and strives to be the "most relentless pioneer marching to the next level of development with unstoppable courage" of Taizhou city.

# 经济规模

Economic  
scale

2019年，全区实现地区生产总值673.9亿元。其中：工业增加值235.4亿元；服务业增加值376.7亿元；城镇常住居民人均可支配收入7.3万元；农村常住居民可支配收入3.5万元。

全区实现地区  
生产总值

**673.9**  
亿元

工业增加值  
**235.4**  
亿元

服务业增加值  
**376.7**  
亿元

城镇常住居民  
人均可支配收入  
**7.3**  
万元

农村常住居民  
人均可支配收入  
**3.5**  
万元

In 2019, the region's GDP reached 67.39 billion yuan. Of this total, the added value of industry is 23.54 billion yuan, the added value of service industry is 37.67 billion yuan, the per capita disposable income of urban permanent residents is 73000 yuan, and the disposable income of rural permanent residents is 35000 yuan.



连续3年位列全国综合实力百强市辖区**50**强，

2019年位列第**46**位。

2020年二季度地区生产总值增长**9.4%**。

Ranked among the top 50 municipal districts with the country's top 100 comprehensive strength for three years in a row.

Ranked 46th in 2019.

GDP grew by 9.4% in the second quarter of 2020.

吉利亚欧工厂



中国日用品商城



# 产业格局

Industrial pattern

产业兴，则城市兴。

If the industry is prosperous, the city is prosperous.

路桥民营经济十分发达。路桥经济总量 82.5% 的贡献比例、64.1% 的投资贡献比例、91% 的税收贡献比例都是由民营经济创造的。

路桥经济总量

82.5  
%

投资贡献比例

64.1  
%

税收贡献比例

91  
%

The private economy of Luqiao is very developed. 82.5% of the total contribution of the road and bridge economy, 64.1% of the investment contribution and 91% of the tax contribution are all created by the private economy.



汽车制造



车展



目前，路桥的经济发展已迈入后工业化时期，形成了汽摩、机电、金属加工三大支柱产业和智能卫浴、农业植保机械、塑料制品三大特色产业，具有较强的产业配套能力和灵活的供应链体系，是现代制造业落地投产的首选之地。

At present, the economic development of Luqiao has entered the post-industrialization period, forming three pillar industries of automobile and motorcycle, mechanical and electrical, metal processing and threxxx characteristic industries of intelligent sanitary ware, agricultural plant protection machinery and plastic products. with strong industrial supporting capacity and flexible supply chain system, it is the preferred place for modern manufacturing industry to be put into production.

# 交通体系

Traffic system

路桥拥有发达的海陆空立体式交通体系。“高速公路、铁路、城市轻轨、城市快速路、机场”五位一体，并与周边头门港、海门港、龙门港紧密相连，形成了通达杭州 1 小时、上海 2 小时、全国 4 小时交通圈。

1 小时  
通达杭州

2 小时  
通达上海

4 小时  
通达全国

Luqiao has a well-developed sea, land and air three-dimensional transportation system. The five-in-one "highway, railway, urban light rail, urban expressway and airport", which is closely connected with the surrounding Toumen Port, Haimen Port and Longmen Port, has formed a traffic circle with access to Hangzhou for 1 hour, Shanghai for 2 hours and the whole country for 4 hours.



动车进商都



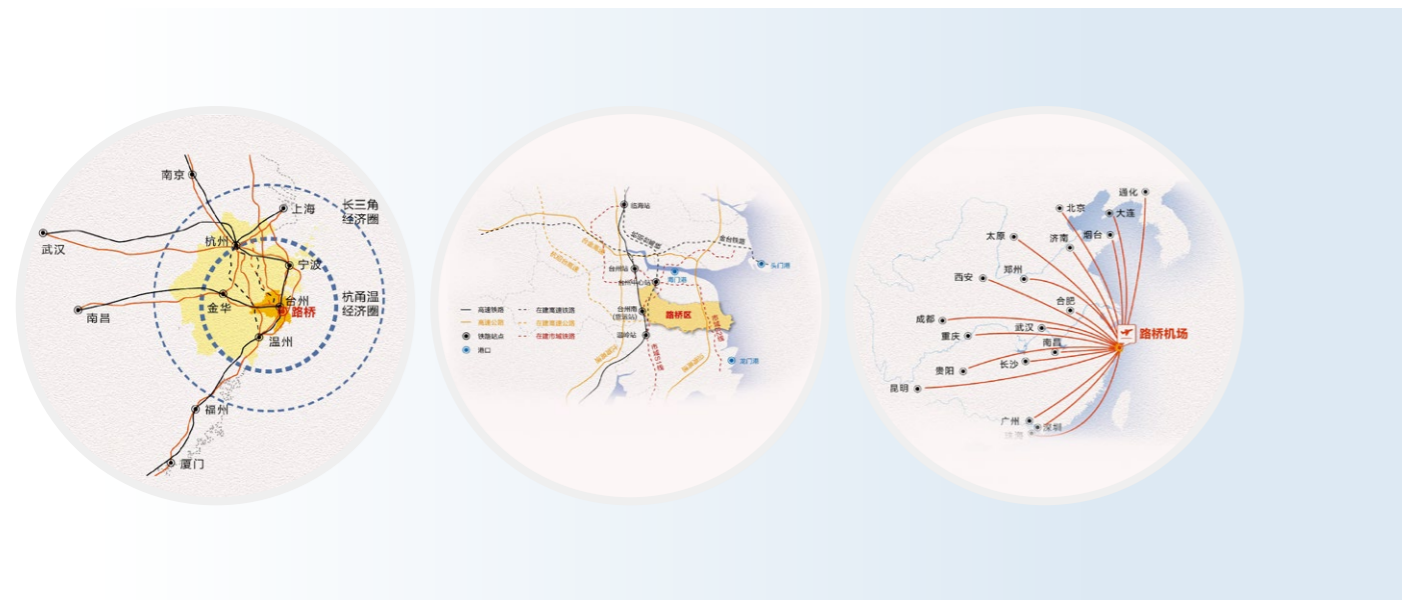
台州机场（路桥）



立交



现代大道



# 生态环境

Ecological environment



飞龙湖

路桥境内有山、有水、有平原、有渔港、有岛屿、有海湾，自然条件优渥，生态环境优良。目前已建成2条省级“美丽河湖”、3座面积在百亩以上的城市绿地公园和13公里城市绿道，2020年全面完成“污水零直排区”创建，全年空气优良天数达321天。

There are mountains, water, plains, fishing ports, islands and bays in the territory of Luqiao, with excellent natural conditions and excellent ecological environment. At present, two provincial-level "beautiful rivers and lakes", three urban green parks with an area of more than 100 mu and 13 kilometers of urban greenways have been built, and it is fully completed the establishment of the "zero direct discharge zone of sewage" in 2020, with 321 days of excellent air throughout the year.



黄礁岛



雾锁中央山

## 第二章

# 开发区概况

Chapter 2

General situation of  
development zone

开发区概况

002

# 区域规划

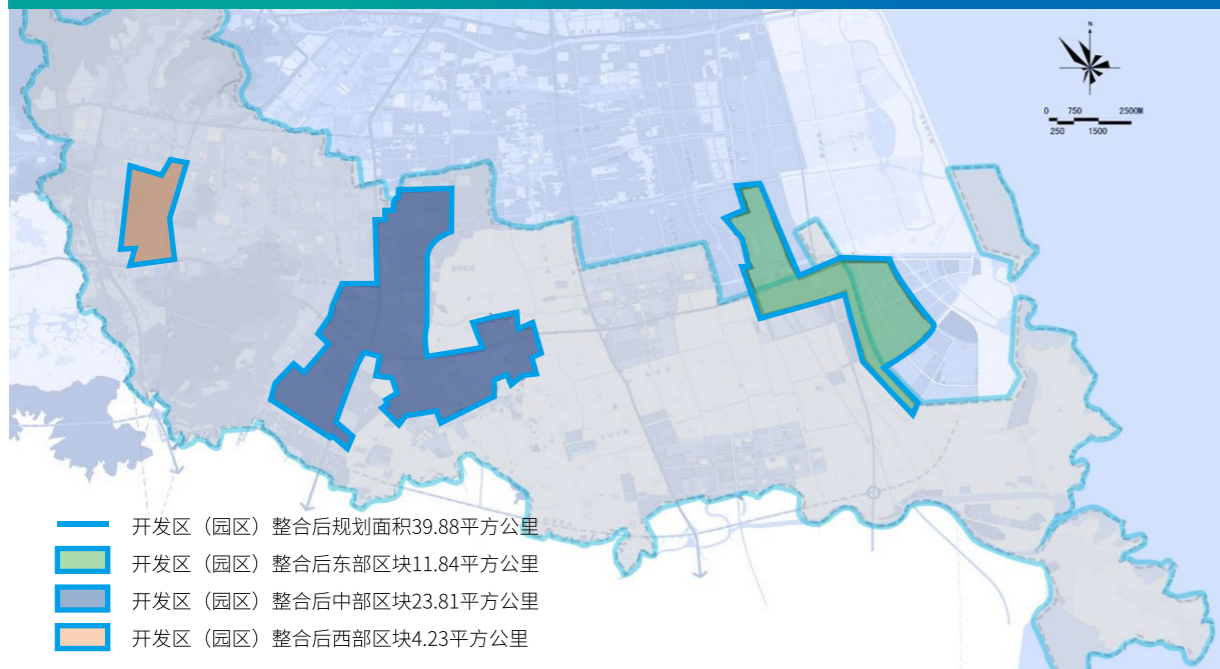
Regional  
planning

浙江路桥经济开发区总规划面积 39.88 平方公里，由金属资源再生基地、机电产业园、吉利汽车小镇等各类园区组成，以汽车零部件、高端装备制造业、金属再生产业为主导产业，形成了东、中、西“一区三园”的特色产业格局。

Zhejiang Luqiao Economic Development Zone, with a total planning area of 39.88 square kilometers, is composed of metal resource reproduction base, electromechanical industrial park, Geely Automobile town and other parks. The development zone takes automobile parts industry, high-end equipment manufacturing industry and metal recycling industry as the leading industries, which forms a professional industrial pattern of "one zone, three parks in the East, the middle and the West".

## 路桥开发区（园区）整合后规划示意图

Planning sketch map of Luqiao Development Zone (Park) after integration



# 发展目标

Development  
goal

浙江路桥经济开发区将全力落实“接轨大上海、融入长三角”战略，对接浙江省大湾区大通道，台州湾区两翼互动，以高质量发展为主线，加快产业数字化转型，优化规划布局，加快空间扩容，理顺体制机制，谋划一批高端装备、智能制造、新基建等项目，打造高质量发展示范园区。

Zhejiang Luqiao Economic Development Zone will make every effort to implement the strategy of "connecting Greater Shanghai and integrating into the Yangtze River Delta", docking the Great Corridor of the Greater Bay District of Zhejiang Province, the interaction between the two wings of Taizhou Bay District, taking high-quality development as the main line, speeding up industrial digital transformation, optimizing planning and layout, speeding up spatial expansion, straightening out institutional mechanisms, planning a number of high-end equipment, intelligent manufacturing, new infrastructure and other projects, and building a high-quality development demonstration park.



# 产业定位

## Industry orientation

聚焦聚力汽车及零部件一大主导产业和智能装备、智能家居两大特色产业，以“高端化、智能化、绿色化、服务化”为发展方向，增总量、优存量、提质量，夯实产业基础，不断提升制造业综合能级和核心竞争力，奋力打造台州湾高端制造与数字经济融合创新发展引领区。

Focusing automobile and spare parts, a leading industry and two characteristic industries of intelligent equipment and intelligent bathroom, take "high-end, intelligent, green and service" as the development direction, increase the total quantity, improve the stock, improve the quality, and consolidate the industrial foundation. we will constantly enhance the comprehensive energy level and core competitiveness of the manufacturing industry, and strive to create a leading area for the innovative development of Taizhou Bay high-end manufacturing and digital economy.



智能卫浴



智能装备



汽车之城

# 区块简介

## Block introduction

### 东部区块

#### Eastern block

由吉利汽车小镇、十塘中心路区块、金属资源再生基地等组成，规划总面积 11.84 平方公里，四至范围：东至十一条河，南至金清大道，西至 G228 国道，北至滨八路。以汽车零部件、高端装备制造业、金属资源再生为核心主导产业，拥有吉利汽车小镇、巨科、齐合环保、熔铸产业园、中小企业创业产业园、电镀产业园、智能制造产业园各类重点园区，双菱集团、延锋安道拓、爱信宏达、乐金华奥斯等多家汽车产业链企业。

It is composed of Geely Automobile Town, Shitang central road block, metal resource recycling base, etc., with a total planning area of 11.84 square kilometers, with four boundaries: 11 rivers in the East, Jinqing Avenue in the south, g228 National Road in the west, and binba road in the north. With auto parts, high-end equipment manufacturing and metal resource reproduction base as the core leading industry, it has various key parks such as Geely Automobile Town, Zhejiang JuKe Aluminum Industry Co., Ltd, Qihe Environmental Protection Group Co., Ltd, melting and casting Industrial Park, small and medium-sized Enterprise Entrepreneurship Industrial Park, Electroplating Industrial Park and Intelligent Manufacturing Industrial Park. Shuangling Group, Yanfeng Andaotuo, Ericsson Hongda, LG Huaos and other automotive industry chain enterprises.



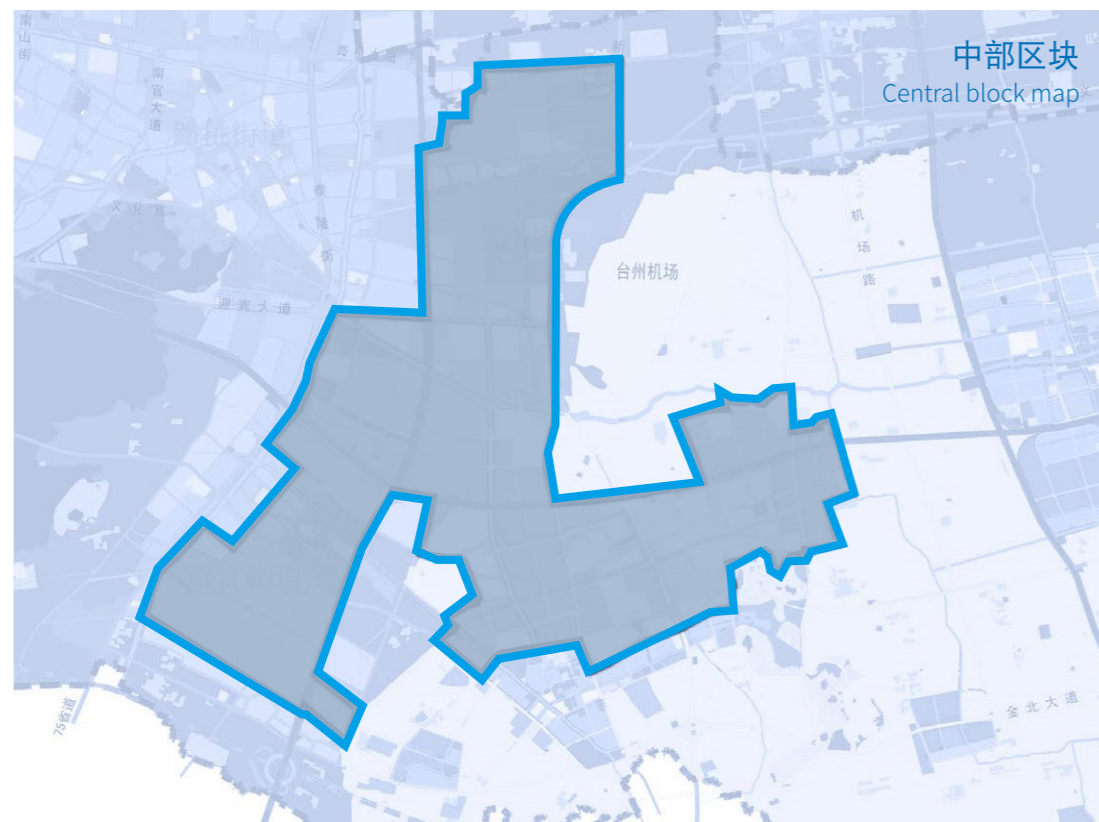
东部区块图  
Eastern block map

## 中部区块

Central block

对原浙江路桥经济开发区智能机电园区块进行拓展，规划总面积 23.81 平方公里，四至范围：东至三才泾、南至园区南路、白剑线、西至南官河、北至路桥大道。以智能机电、智能家居为主导产业，已入驻香港青年产业园、八环轴承、忠德、铭匠等多家企业。

The former Zhejiang Luqiao Economic Development Zone Intelligent Mechanical and Electrical Park is expanded with a total planning area of 23.81 square kilometers, ranging from Sancaijing in the east, South Road in the south, Baijian Line in the west to Nanguanhe in the west and Luqiao Avenue in the north. With intelligent mechanical and electrical, smart home as the leading industry, has been stationed in Hong Kong Youth Industrial Park, eight-ring bearings, Zhongde, engraving and other enterprises.

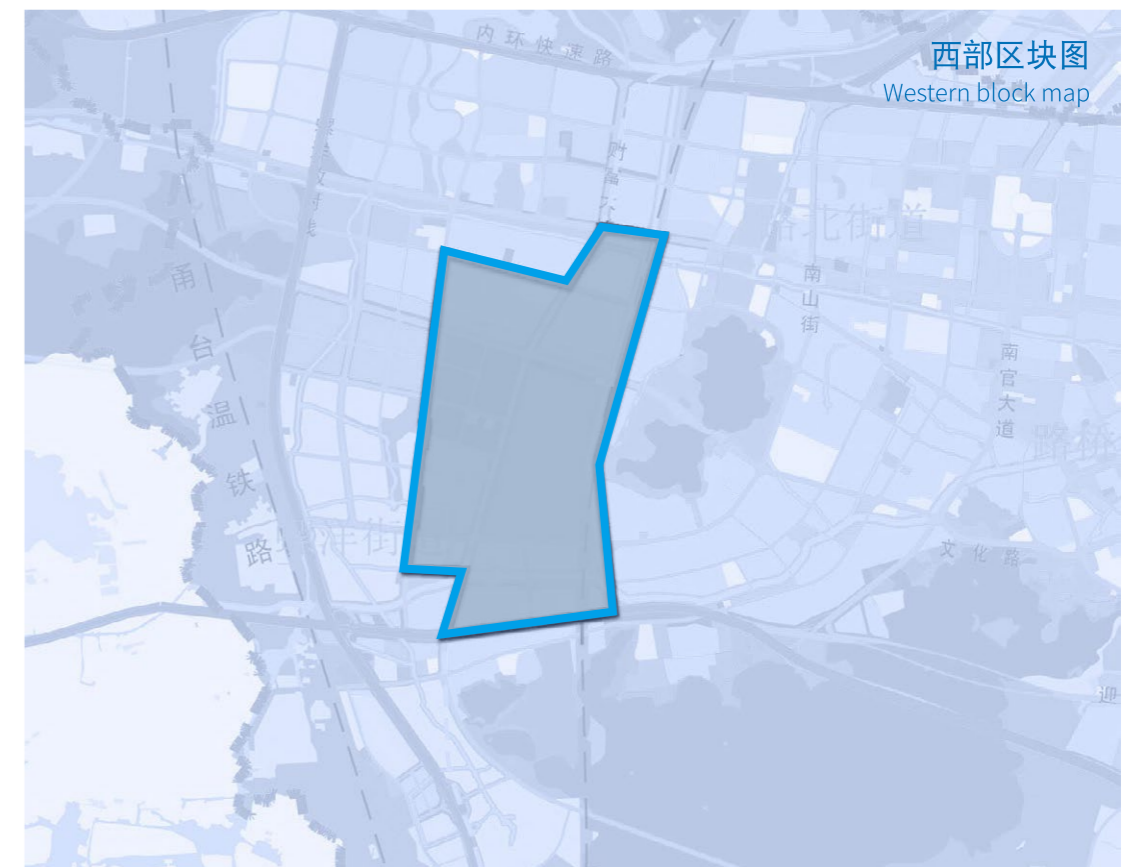


## 西部区块

Western block

即原浙江路桥经济开发区汽车及零部件产业基地，规划总面积 4.23 平方公里，四至范围：东至龙栖路、南至院路路、西至桐屿大道、北至路桥大道。重点发展汽车零部件产业，园区内有福林国润、豪达、新商城、未来社区等。

That is, the former automobile and spare parts industry base of Zhejiang Luqiao Economic Development Zone, with a total planning area of 4.23 square kilometers, ranging from Longqi Road in the east, Yuanyuan Road in the south, Tongyu Avenue in the west and Luqiao Avenue in the north. Focus on the development of auto parts industry, the park has Fulin Guorun, Gouda, the new mall, the future community and so on.



# 重点项目

Key project

## 亚欧汽车制造（台州）有限公司

Asia and Europe Automobile Manufacturing (Taizhou) Co., Ltd



亚欧汽车制造（台州）有限公司区块图

亚欧汽车制造（台州）有限公司建成了国内首个CMA现代化工厂，总占地面积1101亩，投资生产吉利旗下沃尔沃XC40、极星2等2种车型，具备年产26.5万辆整车生产能力。

Asia and Europe Automobile Manufacturing (Taizhou) Co., Ltd. has built the first CMA modern chemical plant in China, covering a total area of 1101 mu. It has been producing Volvo XC40 and Jixing 2, which are owned by Geely Automobile Co., Ltd, with an annual production capacity of 265000 vehicles.



## 汽车零部件产业基地

Auto parts industry base



汽车零部件产业基地区块图

位于路桥区蓬街镇东方大道以南区块，总规划用地约1400亩，计划将培育一批知名品牌和一批能参与国际竞争的汽车关键零部件生产企业，打造成为在全国有影响力的汽车及零部件产业基地，带动台州汽配行业的整体提升。

Located in the south of Dongfang Avenue, Pengjie Town, Luqiao District, with a total planning area of about 1400 mu, it is planned to cultivate a number of well-known brands and a number of key automobile parts manufacturing enterprises that can participate in international competition. to build an influential automobile and parts industry base in the country, driving the overall promotion of the auto parts industry in Taizhou.

▶ **爱信宏达有限公司年产 120 万台吉利 AW 自动变速箱阀体项目**

项目规划用地 120 亩，总投资约 5 亿元，主要生产汽车零部件及配件制造，项目建成后可年产吉利 AW 自动变速箱阀体 120 万台。



▶ **Ericsson Hongda Co., Ltd. has an annual production capacity of 1.2 million sets of Geely AW automatic gearbox valve body project.**

The project plans to use 120 mu of land, with a total investment of about 500 million yuan, mainly producing auto parts and accessories. After the completion of the project, it can produce 1.2 million sets of Geely AW automatic transmission valve bodies per year.

▶ **同创海城 / 贝吉沃项目**

项目规划用地 37.8 亩，总投资约 1 亿元，拟安排汽车零部件配套项目，打造警用安检设备生产、车辆智能化车联网系统生产及消防用品生产基地。



▶ **Tongchuang Haicheng / beijiwo project**

The planned land of the project is 37.8 mu, with a total investment of about 100 million yuan. It is proposed to arrange supporting projects for auto parts and build a production base for police security inspection equipment, intelligent vehicle networking system and fire fighting supplies.

▶ **延锋安道拓二期项目**

项目位于路桥区东方大道南侧、八条河西侧，为汽车零部件产业基地（一期）2# 厂房工程项目，建筑面积约为 9333 平方米。



▶ **Yanfeng Andaotuo Phase II Project**

The project is located on the south side of Dongfang Avenue in Luqiao District and the west side of Baliaohe River. It is a factory building project of auto parts industry base (phase I), with a construction area of about 9333 square meters.

**浙江巨科铝业有限公司**

Zhejiang JuKe Aluminum Industry Co., Ltd



浙江巨科铝业有限公司是吉利科技集团旗下全资子公司，是一家集科研、制造、经营为一体的高精铝板带箔及其深加工企业、国家高新技术企业。公司总资产 81 多亿元，员工 1500 多人。



Zhejiang JuKe Aluminum Industry Co., Ltd. is a wholly-owned subsidiary of Geely Technology Group, which is also an enterprise focusing on the production of high precision aluminum plate strip and foil and its deep processing and integrating scientific research, manufacturing and operation. The company has a total asset of more than 8.1 billion Yuan and more than 1500 employees.

## 齐合环保集团有限公司

Qihe Environmental Protection Group Co., Ltd



齐合环保集团有限公司 (00976.HK) 是中国最大的废金属回收公司，也是全球最大的废金属回收上市公司之一，业务广泛，涵盖黑色金属、有色金属废料、报废汽车、电子废弃物的回收利用及再生铝锭制造。集团业务覆盖亚洲、欧洲及北美洲，拥有超过 200 个处理加工厂及料场。



Qihe Environmental Protection Group Co., Ltd. (00976. HK) is the largest scrap metal recycling company in China and one of the largest scrap metal recycling listed companies in the world. It has a wide range of business, covering the recycling of ferrous metals, non-ferrous metals' wastes, end-of-life vehicles, electronic waste and the manufacturing of recycled aluminum ingots. The group's business covers Asia, Europe and North America, with more than 200 processing plants and stockyards.

## 恒金能际产业园

Phase I of Hengjin Energy Industrial Park



该产业园分两期建设，由路桥金投公司开发，位于金清镇十塘中心路和新十四路东南角，总占地面积 246 亩，其中一期占地 86 亩，建筑面积 13 万平方米，由 10 幢厂房、1 幢服务用房、1 幢宿舍楼组成，预计 2021 年 11 月底前竣工验收。



The industrial park is divided into two phases, developed by Luqiao Golden Investment Company, and is located at the southeast corner of Shitang Central Road and Xin14 Road in Jinqing Town, covering a total area of 246mu, of which the first phase covers an area of 86 mu and a construction area of 130000 square meters. it is composed of 10 factories, one service room and one dormitory building, which is expected to be completed and accepted before the end of November 2021.



**浙江铭匠科技有限公司年产 1 万台套高品质机床建设项目**  
Zhejiang Mingjiang Technology Co., Ltd. has an annual output of 10,000 sets of high-quality machine tool construction project.

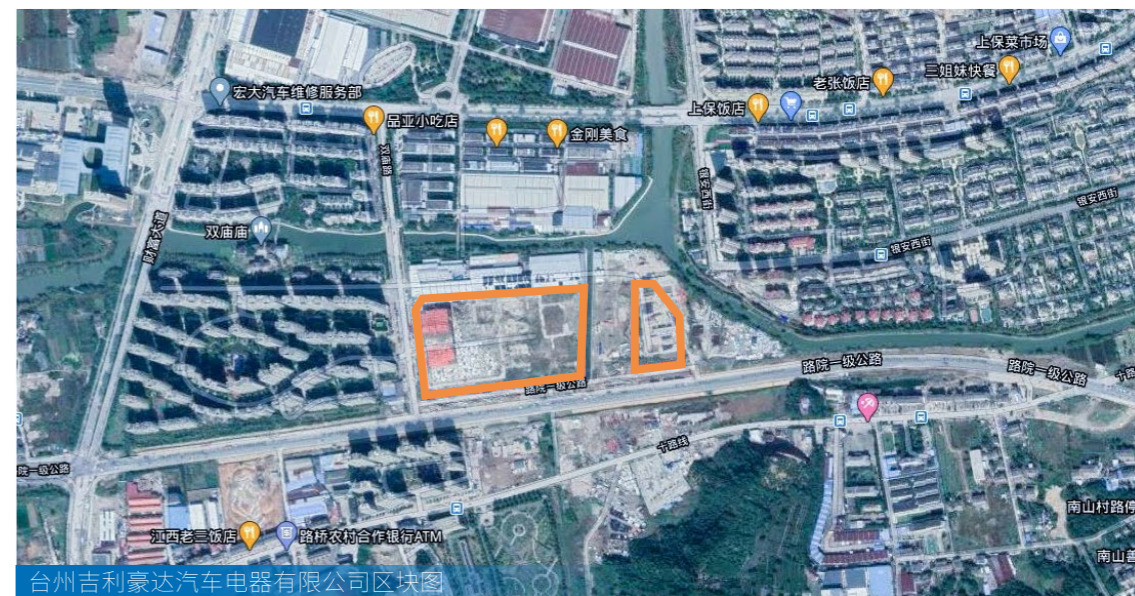


该项目位于新桥镇，规划用地 104 亩，主要生产高品质机床。项目建成后，可年产高品质机床 1 万台套，预计新增销售收入 10 亿元，新增利税 1.5 亿元。

The project is located in Xinqiao Town, with a planned land of 104 mu, mainly producing high-quality machine tools. After the completion of the project, it can produce 10,000 sets of high-quality machine tools per year, with an estimated additional sales revenue of 1 billion yuan and a new profit and tax of 150 million yuan.



**台州吉利豪达汽车电器有限公司（央都汽车部件（浙江）有限公司）200 万套整车线束项目**  
Taizhou Geely Haoda Automotive Electrical Appliance Co., Ltd. (Yangdu Automotive parts (Zhejiang) Co., Ltd.)  
2 million sets of vehicle wiring harness project



项目位于螺洋街道，总投资 8.7 亿元，用地约 124 亩，建筑面积 22 万平米，主要从事整车线束制造生产，达产后可形成年产汽车线束 200 万套的规模，新增产值 30 亿元。可具备体系完善、自主拥有多项专利、国内领先的汽车线束总成一体化研发和生产制造基地。



The project is located in Luoyang street, with a total investment of 870 million yuan, a land area of about 124mu and a construction area of 220000 square meters. It is mainly engaged in the manufacturing and production of complete vehicle wiring harness. After reaching production, it can form an annual production capacity of 2 million sets of automobile wire harness, with an additional output value of 3 billion yuan. Can have a sound system, independent ownership of a number of patents, the leading domestic automotive wiring harness has always become an integrated R & D and manufacturing base.

## 第三章

# 创业热土

Chapter 3

Entrepreneurial hot land

# 03

# 创业热土



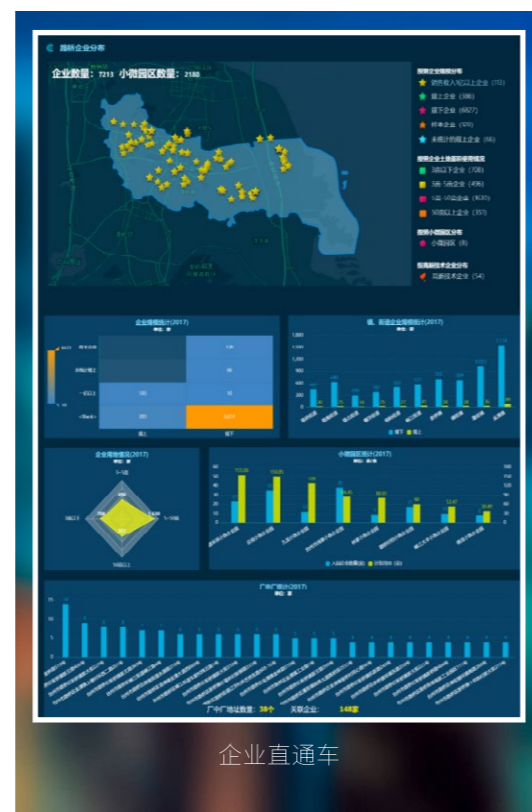
# 政务服务

Government service

以“最多跑一次”改革为引领，大力推进政府数字化转型，政务服务事项“掌上办”“跑零次”比例分别达 100%、95.6%；取消证明事项 530 件；工业“标准地”、项目全流程审批“最多 30 天”。



Led by the reform of "at most one run", vigorously promote the digital transformation of the government, the proportion of "running zero times" of government service items reached 100% and 95.6% respectively, and canceled 530 certification items. Industrial "standard land", project whole process examination and approval "up to 30 days"



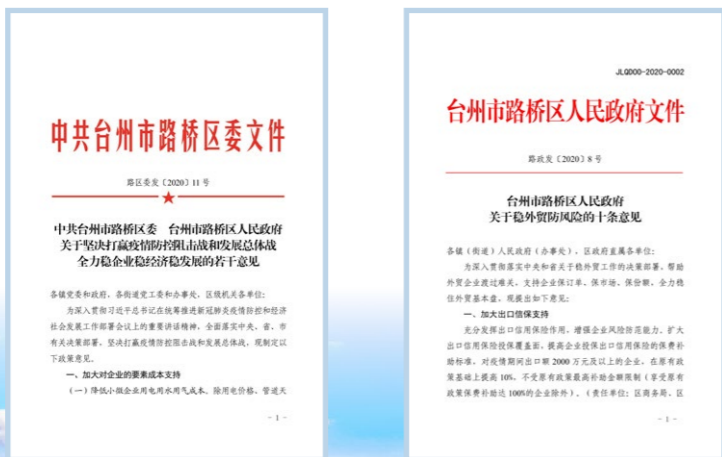
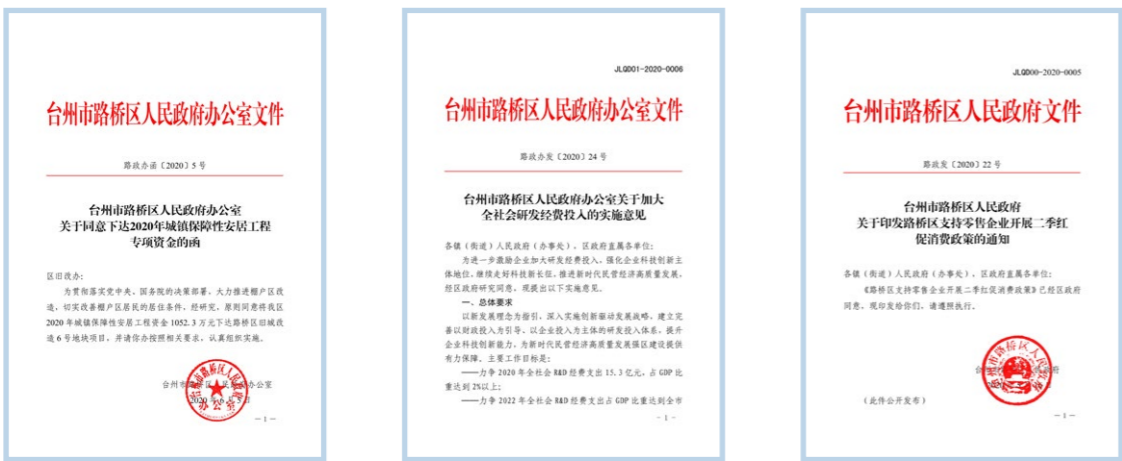
# 要素支撑

Factor support

优化存量资源配置，加强制造业用地保障，存量工业用地“只增不减”，拥有 3056 亩储备用地，200 亩盘活用地。2020 年已出让土地 1086 亩，其中含地块 17 宗，经营性用地 10 宗 635 亩，工业用地 7 宗 451 亩。落实省民营企业发展促进条例，提前兑现上级惠企政策，兑现 12.1 亿各类对策资金，政策兑现率 137.4%。出台外贸、批零、金属再生等领域扶持政策，帮助企业渡过难关。



Optimize the allocation of stock resources, strengthen the protection of manufacturing land, the stock of industrial land "only increase, not decrease", with 3056 mu of reserve land, 200mu of invigorated land. In 2020, 1086 mu of land has been sold, including 17 cases of land plots, 10 cases of commercial land and 7 cases of industrial land. We will implement the provincial regulations on the promotion of the development of private enterprises, cash in advance the policy of benefiting enterprises from higher authorities, and cash in 1.21 billion all kinds of countermeasure funds with a policy exchange rate of 137.4%. We will introduce support policies in foreign trade, wholesale, metal recycling and other areas to help enterprises tide over the difficulties.



《中共台州市路桥区委台州市路桥区人民政府关于坚决打赢疫情防控阻击战和发展总体战全力稳企业稳经济稳发展的若干意见》《中共台州市路桥区人民政府办公室关于加大全社会研发经费投入的实施意见》《中共台州市路桥区人民政府关于印发路桥区支持零售企业开展第二季红促消费政策的通知》《中共台州市路桥区人民政府办公室关于同意下达2020年城镇保障性安居工程专项资金的函》《中共台州市路桥区人民政府关于稳外贸防风险的十条意见》

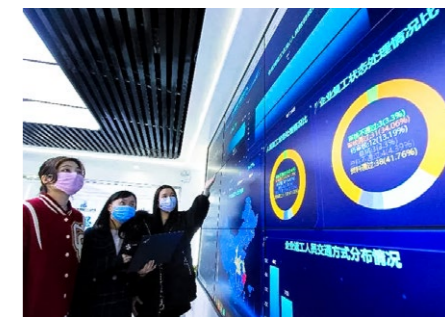
# 科技活力

Scientific and technological vitality

台州工业互联网平台入选国家制造业“双创”平台试点示范项目，与华为签订“数字路桥”全面合作协议，路桥区入选2019年浙江产业数字化转型前20强。浙大机电研究院、浙工大路桥技术转移中心等平台的先后创建，为服务企业创新开启了新的通路。小微企业园新开工3个、新投运5个，老旧工业点完成改造20个。新增国家高新技术企业21家、省级科技型中小企业81家。新增“浙江制造”团体标准5项、“品字标浙江制造”企业4家。

小微企业园 新开工	小微企业园 新投运	老旧工业点 完成改造	新增国家高 新技术企业	省级科技型 中小企业	新增“浙江制 造”团体标准	“品字标浙江 制造”企业
3	5	20	21	81	5	4
个	个	个	家	家	项	家

Taizhou Industrial Internet platform was selected into the national manufacturing "mass entrepreneurship and innovation" platform pilot demonstration project, signed a "digital Luqiao" comprehensive cooperation agreement with Huawei, and Luqiao District was selected into the top 20 of Zhejiang industrial digital transformation in 2019. The establishment of platforms such as the Mechanical and Electrical Research Institute of Zhejiang University and the Zhejiang Engineering Luqiao Technology transfer Center have opened a new channel for the innovation of service enterprises. Three new small and micro enterprise parks have been started, five have been put into operation, and 20 old industrial sites have been renovated. There were 21 new national high-tech enterprises and 81 provincial-level science and technology-based small and medium-sized enterprises. Five new "made in Zhejiang" group standards and four "made in Zhejiang" enterprises have been added.



数字路桥



工业互联网

# 人才战略

Talent strategy



制定出台《路桥人才新政四十条》《路桥社会事业人才发展四十条》等政策文件。截至 2019 年底，路桥共引育海内外院士 4 人、国家级引才计划 11 人、省级引才计划 14 人、省级海外工程师 1 人、市级海外工程师 11 人、市“500 精英计划”76 人、市领军型创新创业团队 2 个。



Formulate and promulgate policy documents such as "40 articles on the New deal for Luqiao talents" and "40 articles on the Development of talents in Luqiao Social undertakings". By the end of 2019, Luqiao has attracted 4 academicians at home and abroad, 11 national talent introduction programs, 14 provincial talent introduction programs, 1 provincial overseas engineer, 11 municipal overseas engineers, 76 municipal "500 Elite Program" and 2 city leading innovation and entrepreneurship teams.

# 公共服务

Public service

近年来，路桥相继成为国家公共文化服务体系示范区、省基本实现教育现代化、省级区域医共体试点。

In recent years, Luqiao have become the demonstration areas of the national public cultural service system, the basic realization of educational modernization in the province, and the pilot project of the regional medical community at the provincial level.





# 第四章 重点招引

Chapter 4  
Key attraction

# 04 重点招引

# 产业招引

## Industrial attraction

- 新能源汽车产业 New energy automobile industry
- 智能装备产业 Intelligent equipment industry
- 智能家居产业 Smart home industry
- 金属资源再生产业 Metal resources recycling industry
- 汽摩配产业 Automobile and motorcycle parts industry
- 智能机电产业 Intelligent mechanical and electrical industry
- 通用设备制造业 General equipment manufacturing industry
- 卫浴产业 Sanitary ware industry
- 智慧社区管理产业 Smart community management industry

满足三类工业用地  
(M3) 需求

Meet three types of  
industrial land  
(M3) Demand

### ► 新能源汽车产业

立足整车制造产业基础，顺应汽车电气化、电子化、智能化、网联化发展趋势，做大做强以沃尔沃为龙头的新能源汽车产业链。加大补链强链力度，重点引进动力电池、驱动电机、电控、充电、制动等核心零部件研发生产企业，支持整车、零部件、充电桩企业建立产业链战略联盟，推动产业链协同发展。



### ► New energy automobile industry

Based on the basis of the whole vehicle manufacturing industry, complying with the development trend of automobile electrification, electronics, intelligence and networking, we will expand and strengthen the new energy vehicle industry chain with Volvo as the leader. We will strengthen the supply chain, focus on the introduction of R & D and manufacturing enterprises of core components such as power batteries, drive motors, electric control, charging and braking, and support enterprises of complete vehicles, spare parts and charging piles to establish strategic alliances in the industrial chain. promote the coordinated development of the industrial chain.

### ► 智能装备产业

聚焦高端装备制造，特色发展新型农业装备、高端轻工装备、特色装备等产业，重点发展精量施药机械、排灌机械、高性能塑料装备、包装装备、泵阀、特种电机等，推动产业向高端化、智能化、绿色化、服务化方向发展。



### ► Intelligent equipment industry

Focus on high-end equipment manufacturing, characteristic development of new agricultural equipment, high-end light industrial equipment, special equipment and other industries, focusing on the development of precision chemical application machinery, irrigation and drainage machinery, high-performance plastic equipment, packaging equipment, pump valves, special motors, etc., promote the development of the industry to high-end, intelligent, green, service-oriented direction.

### ► 智能家居产业

牢牢把握消费升级和产业升级趋势，重点发展智能家居产业，优化开发区产业结构，形成良好的产业链配套。

### ► Smart home industry

Firmly grasp the trend of consumption upgrading and industrial upgrading, focus on the development of smart home industry, optimize the industrial structure of the development zone, and form a good industrial chain.



### ► 金属资源再生产业

聚焦金属资源再生产业，围绕环保装备研发制造、再生金属循环化综合利用两大领域，重点招引有特殊用地需求，高科技、高投入、高产出的“三高”企业。

### ► Metal resources recycling industry

Focus on the metal resources recycling industry, focusing on the two major areas of environmental protection equipment R & D and manufacturing, recycling and comprehensive utilization of recycled metals, focusing on attracting "three high" enterprises with special land needs, high technology, high input and high output.

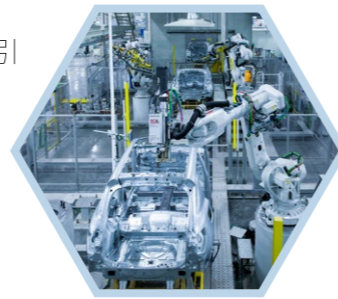


### ► 汽摩配产业

围绕吉利、吉利、永源、中能等多家汽车整车生产企业，依托已招引的双菱集团、延锋安道拓、爱信宏达、乐金华奥斯等汽车制造项目，以开发原有电子机械、汽车配件等产业集群为基础，重点引进汽车摩托车零部件产业，积极招引相关上下游产业链配套企业入园，聚力打造汽摩配产业集群。

### ► Automobile and motorcycle parts industry

Centering on Geely, Geo, Yongyuan, Zhongneng and other automobile manufacturing enterprises, relying on the automobile manufacturing projects such as Shuangling Group, Yanfeng Andotuo, Ericsson Hongda, Lakin Huaos, etc., based on the development of the original electronic machinery, auto parts and other industrial clusters, focus on the introduction of automobile and motorcycle parts industry, actively attract relevant upstream and downstream industrial chain supporting enterprises into the park, gather strength to build auto and motorcycle parts industrial clusters.



### ► 智能机电产业

重点招引高端装备制造、智能制造、高新技术等企业，加快推进智能机电创新型产业集群建设。

### ► Intelligent mechanical and electrical industry

We will focus on attracting high-end equipment manufacturing, intelligent manufacturing, high-tech and other enterprises to speed up the construction of intelligent mechanical and electrical innovative industrial clusters.



### ► 通用设备制造业

日前，路桥与华为签订“数字路桥”全面合作协议，加速“5G+工业互联网”的步伐，为助力数字化、网络化、智能化转型，重点招引通讯电子设备类企业。

### ► General equipment manufacturing industry

A few days ago, Lu Qiao and Huawei signed a comprehensive cooperation agreement on "Digital Road and Bridge" to accelerate the pace of "5G + Industrial Internet", focusing on attracting communication and electronic equipment enterprises in order to facilitate the transformation of digitalization, networking and intelligence.



### ► 卫浴产业

立足开发区良好的产业发展基础及区位优势，面向卫浴企业招商，推动路桥卫浴产业发展。

### ► Sanitary ware industry

Based on the good industrial development foundation and location advantages of the development zone, attract investment from sanitary ware enterprises and promote the development of road and bridge sanitary ware industry.



### ► 智慧社区管理产业

依托未来社区项目，重点招引综合开发实力强、后期运营能力突出的企业，利用云计算、大数据等技术，搭建综合型的信息化平台，为社区管理部门、社区居民等带来全新的体验，提升城市管理和社会管理科学化水平，推动社区应用的全面覆盖和智慧化管理。

### ► Smart community management industry

Relying on future community projects, we will focus on attracting enterprises with strong comprehensive development strength and outstanding operational capabilities in the later stage, and build a comprehensive information platform by using cloud computing, big data and other technologies, so as to bring brand-new experience to community management departments and community residents, enhance the scientific level of urban management and social management, and promote comprehensive coverage and intelligent management of community applications.



# 项目招引

Project attraction

## 小镇田园综合体项目

Small town pastoral complex project

该项目位于吉利汽车小镇的核心区块，G228 国道以东和东方大道的交叉口，总用地 1403 亩，建设用地约 109 亩，以打造生产、生活、生态“三生融合”特色小镇为目标，依托青龙浦生态优势，建设集农业观光、农耕体验、休闲旅游、田园农家乐、民宿于一体的乡村田园综合体。



The project is located in the core block of Geely Automobile Town, east of G228 National Highway and the intersection of Oriental Avenue, with a total land of 1403 mu and construction land of about 109mu. With the goal is to create a "three life integration" characteristic town of production, life and ecology, advantages of Qinglongpu, build a rural pastoral complex that integrates agricultural sightseeing, farming experience, leisure tourism, pastoral farm music and residential accommodation.

## 机电产业园项目

Mechanical and Electrical Industry Park Project

该项目位于台州市路桥区金属资源再生产业基地第五十三号地块，占地面积 140 亩，总建筑面积 18.7 万平方米，建设办公楼、清洗机车间、精加工车间、注塑车间、电机车间、模具车间、立体化仓储、实验室、检验室，重点招引机械加工、泵阀制造等机电生产及配套企业。

The project is located in Block 53 of Metal Resources Recycling Industry Base, Luqiao District, Taizhou City, covering an area of 140mu with a total construction area of 187000 square meters. the construction of office buildings, cleaning machine workshops, finishing workshops, injection molding workshops, motor workshops, mold workshops, three-dimensional warehousing, laboratories, testing rooms, focusing on mechanical processing, pump valve manufacturing and other mechanical and electrical production and supporting enterprises.



## 汽车零部件强链补链产业园项目

Auto parts strong chain complement chain Industrial Park Project

该项目位于台州市路桥区金属资源再生产业基地第四十四号地块，占地面积 120.7 亩，总建筑面积 18.5 万平方米，建设铸造车间、制芯车间、机加工车间、模具及维修车间、污水处理中心、综合办公楼、职工宿舍、研发中心以及检测中心，重点招引新能源汽车电池生产利用及其他汽车零部件产业。

The project is located in Block 44 of Metal Resources Recycling Industry Base, Luqiao District, Taizhou City, covering an area of 120.7 mu, with a total construction area of 185000 square meters. Construction of foundry workshop, core-making workshop, machining workshop, mold and maintenance workshop, sewage treatment center, comprehensive office building, staff dormitory, R & D center and testing center, focusing on attracting new energy vehicle battery production and utilization and other auto parts industry.

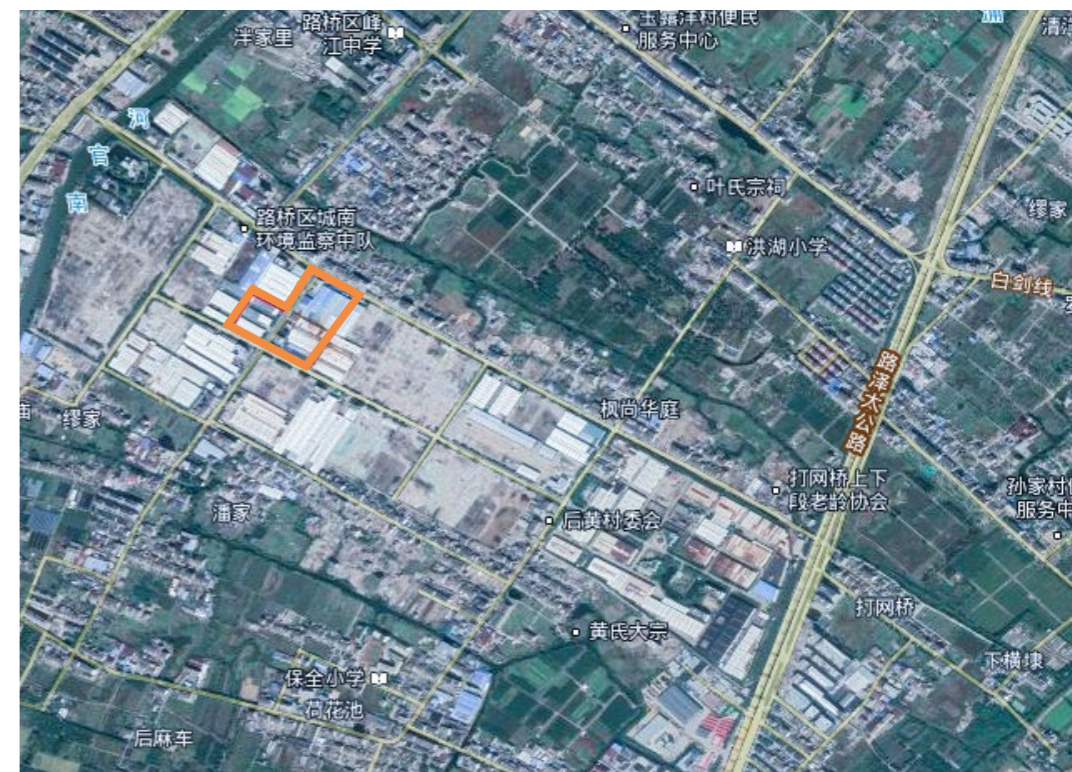


## 科创产业园项目

Science and Technology Innovation Industrial Park Project

该项目位于台州市路桥区中小企业转型升级创新示范园区中路以北、镇中路以西 3-1# 地块，占地面积 71 亩，总建筑面积 11.4 万平方米。具体工程包括主体工程、基础设施配套工程、园区配套停车场及停车位、充电桩工程等。重点招引电子商务、高端机床及其他数字化创新型企业。

The project is located in Luqiao District, Taizhou City, the transformation and upgrading of small and medium-sized enterprises to the north of the Middle Road and the west of Zhenzhong Road, covering an area of 71 mu, with a total construction area of 114000 square meters. The specific projects include the main project, infrastructure project, park supporting parking lot and parking space, charging pile project and so on. Focus on attracting e-commerce, high-end machine tools and other digital innovative enterprises.





产业发展蒸蒸日上，产业建设欣欣向荣

活力商都 美丽路桥

我们诚邀您的加入

Industrial development is booming, and industrial construction is booming.

Active Shangdu

Beautiful Luqiao

We sincerely invite you to join us.