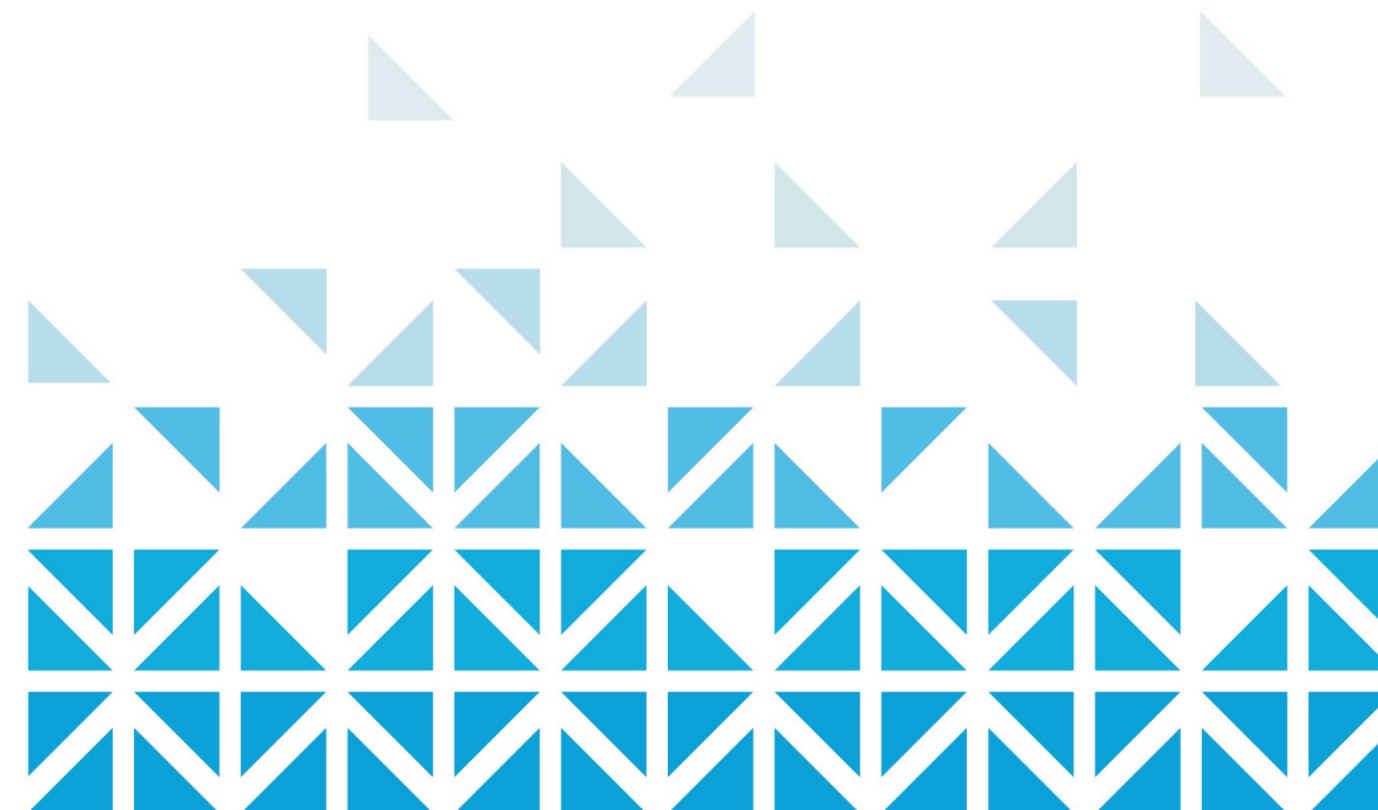


Ningbo Yinzhou Economic
Development Zone
宁波市鄞州经济开发区
INVESTMENT GUIDE
投资指南
2017



宁波市鄞州经济开发区
Ningbo Yinzhou
Economic Development Zone

地址：宁波市鄞州经济开发区鄞东南路111号
Add: No.111 Yindong South Road, Yinzhou Economic
Development Zone, Ningbo
电话 Tel: 86-574-88194133/88194135
传真 Fax: 86-574-88194133
邮箱 E-Mail: bh@nbyz.gov.cn
网站 Website: <http://bhibi.nbyz.gov.cn/>





宁波市鄞州经济开发区
Ningbo Yinzhou
Economic Development Zone

智慧型蓝色经济产业园
Smart Blue Economic Industrial Park



Content 目录

概况	OVERVIEW	01
区位	LOCATION	10
产业	INDUSTRIES	13
配套	SUPPORTING FACILITIES	17
未来	FUTURE	19
附件：投资程序及公用事业费用	ATTACHMENT: Investment procedure and public utilities charges	21



01 OVERVIEW

概况

宁波--长三角南翼的经济中心及交通枢纽

Ningbo-economic center and transportation hub of the south wing of Yangtze River Delta

宁波简称“甬”，位于我国大陆海岸线中段、长江三角洲南翼，是首批对外开放的沿海港口城市、计划单列市和副省级城市之一。现辖6个区、2个县级市、2个县，面积9800多平方公里，人口800多万。宁波历史悠久，人文荟萃，尤以宁波港、宁波帮、宁波装、宁波景“四张城市名片”闻名。

Ningbo, also called “Yong” for short, is located in the middle of China’s mainland coastline, on the south wing of Yangtze River Delta. It’s one of the first coastal port cities that China opened to the outside world, one of the cities listed independently in national social and economical development plan and one of the sub-provincial cities. Now it has 6 districts, 2 county-level cities and 2 counties. Its area is over 9,800 square kilometers and its population is over 8 million. Ningbo has a long history and gathers talents. It’s known for its “4 business cards”, namely Ningbo Port, Ningbo Merchants, Ningbo Garment and Ningbo Landscape.



2016年，宁波市实现地区生产总值8541.1亿元，完成一般公共预算收入1114.5亿元，实现固定资产投资4961.4亿元，完成规模以上工业总产值达到14440.2亿元，均居浙江省前列。

In 2016, Ningbo achieved a gross regional production of RMB 854.11 billion, a general public budget revenue of RMB 111.45 billion, a fixed asset investment of RMB 496.14 billion, and a gross industrial output value above designated size of RMB 1444.02 billion, all ranking among the best of Zhejiang Province.

2016年，宁波港口集装箱吞吐量跃升到全球第四位，增幅位居大陆主要港口首位。

In 2016, Ningbo Port’s container throughput rose to the fourth place in the world and its rate of increase topped the list of Chinese Mainland’s main ports.

中国大陆综合竞争力前15强城市，长三角五大区域中心之一，长三角南翼经济中心，浙江省经济中心，现代化国际港口城市，国家历史文化名城，连续四次蝉联全国文明城市，中国著名的院士之乡。

Ningbo, one of top 15 cities in Chinese mainland for comprehensive competitiveness; one of the five largest regional centers in Yangtze River Delta; economic center of the south wing of Yangtze River Delta; economic center of Zhejiang province, modern and international port city, national historical and cultural city; win the title of national civilized city four times running; famous home town of academicians in China.

计划单列城市	City directly under state planning
国家历史文化名城	National historical and cultural city
国家森林城市	National forest city
国家卫生城市	National sanitary city
全国文明城市	National civilized city
国家环保模范城市	National model city for environment protection
中国最佳投资吸引力城市	China's best city for investment attraction
中国最佳生态环境投资城市	City with the best ecological investment environment in China
中国大陆最佳商业城市	The best commercial city in Chinese mainland

投资在宁波的世界500强企业
Fortune Global 500 enterprises in Ningbo



鄞州--
长三角最佳投资区域之一

Yinzhou-
one of the regions with best investment
environment in Yangtze River Delta

鄞州区是宁波“中心之地”、“开放之窗”，是宁波新行政中心所在地。区域面积817.1平方公里，下辖14个街道、10个镇，户籍人口96万。

鄞州产业配套齐全、发展载体优质、经济外向度高、政府服务高效。2016年，全区实现地区生产总值1342.5亿元，财政总收入366.4亿元，其中一般公共预算收入230.4亿元，位列全省第一。至今有来自70多个国家和地区的1400多家外资企业在鄞投资兴业，吸引了沃尔玛、麦德龙、宜家等近20家世界500强企业落户，目前年销售超百亿、超十亿、超亿元的企业分别达4家、29家和451家，上市公司15家，全区亲商、安商、富商的氛围十分浓厚。

Yinzhou District is the center of Ningbo, where the new Ningbo Administration Center is located. It covers an area of 817.1 square kilometers, including 14 townships and 10 towns with a registered population of 960 thousand.

Yinzhou has complete associated industries, quality development platforms, open economy and efficient governmental services. In 2016, the district achieved a gross regional production of RMB 134.25 billion and a general financial revenue of RMB 36.64 billion in which the general public budget revenue was RMB 23.04 billion, ranking No.1 in Zhejiang Province. Over 1,400 overseas-funded enterprises from more than 70 countries and regions have invested in Yinzhou, including nearly 20 Fortune Global 500 companies, such as Walmart, Metro and IKEA. At present, the numbers of companies with annual sales over RMB 10 billion, one billion and 100 million are 4, 29 and 451 respectively. The district owns 15 listed companies.

综合实力居全国百强区第五
Rank fifth in China's top 100 districts in
terms of comprehensive strength

全国优秀科技进步示范区
National excellent demonstrative districts
for scientific and technological progress

浙江省卫生强区
Best sanitary district in Zhejiang province

浙江省教育强区、浙江省体育强区、
浙江省旅游经济强区
The area with strong education, sports and
tourism in Zhejiang province

浙江省文明县（市、区）
Civilized county (city or district) of Zhejiang province



悠久历史 Long History

鄞州原为鄞县，已有2200多年历史。鄞州自古商贸繁盛，是著名的“海上丝绸之路”、“瓷器之路”的起源地，“宁波帮”的发祥地，素有“无鄞不成市”之说。2002年2月经国务院批准，撤县设区。2016年，国务院撤销宁波江东区，将原江东区管辖的行政区域划归鄞州区，东部新城、南部新城交相辉映，如“日月合璧”。东部新城是宁波行政中心所在地，是宁波政治、经济、文化、金融、物流、会展和商业中心，南部新城集政治、商贸、居住、科技、体育和文化中心于一体。

拥有东钱湖、天童禅寺、阿育王寺等风景名胜以及万达广场、印象城、银泰城、湿地公园、宁波博物馆、南高教园区等功能区块，宁波环球航运广场、国际金融中心、宁波中心等城市建筑已经成为宁波的地标之一，新城区荣获联合国人居奖优秀范例奖。

Originally called Yin County, Yinzhou has a history of more than 2,200 years. Yinzhou has been prosperous in commerce and trade since ancient times. It was the origin of “Maritime Silk Road” and “Porcelain Road” and the birthplace of “Ningbo overseas entrepreneurs”, as the old saying goes “No Yinzhou, no market”. In February 2002, the State Council approved Yin County to change into Yinzhou District. In 2006, the State Council merged Jiangdong District of Ningbo into Yinzhou District. The East New Town and South New Town are two cores, just like the sun and moon. The East New Town is the political, economical, cultural, financial, logistics and exhibition centers. The South New Town integrates the politics, commerce, trade, living, technologies, sports and culture .



Yinzhou has famous scenic attractions such as Dongqian Lake, Tiantong Temple and Temple of King Asoka. Wanda Plaza, InCity plaza, Intime City, wetland park, Ningbo Museum, south higher education park, Global Shipping Square, International Financial Center, and Ningbo Center have become landmarks. The new district has won the Excellent Demonstrative Habitat Award of UN.



1. 天童寺Tiantong Temple
2. 南部商务区Southern Business District
3. 万达广场Wanda Plaza
4. 东部新城East New Town
5. 宁波诺丁汉大学University of Nottingham Ningbo China

宁波市鄞州经济开发区

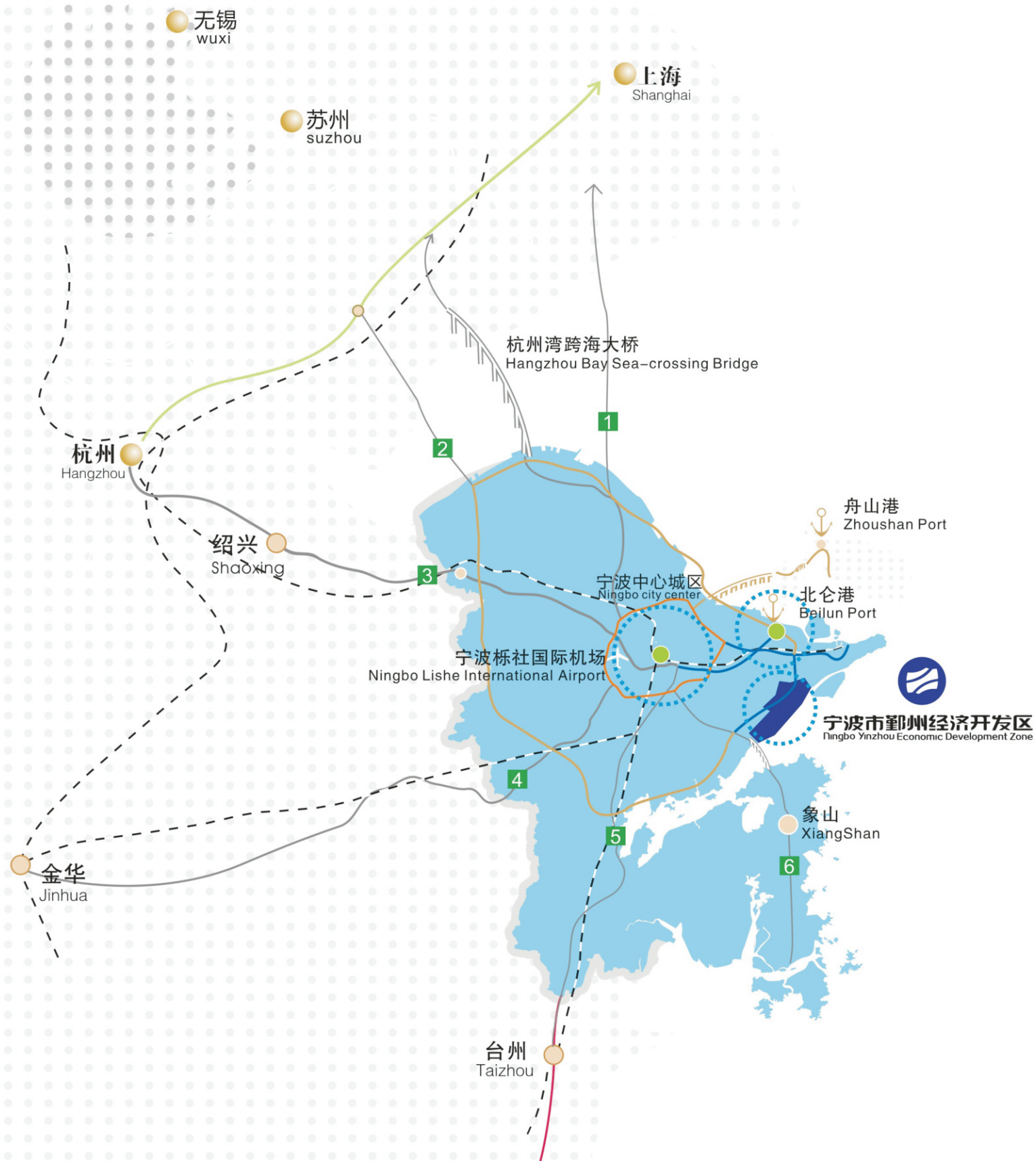
Ningbo Yinzhou Economic
Development Zone

宁波市鄞州经济开发区位于宁波市鄞州区东南沿海，前身为鄞州滨海创业中心，于2005年启动开发，规划开发面积15.02平方公里，分两期建设（一期规划面积6.44平方公里，二期规划面积8.58平方公里），2014年12月，获批省级经济开发区。鄞州经济开发区作为我省重要的临港先进制造业承载区，致力于打造千亿能级的智慧型蓝色经济产业园。

宁波正在举全市之力创建国家级梅山新区，范围包括开发区。开发区的基础设施、招商引资、商业配套将进一步提升，产业协同、区域融合将大大加快。

Formerly known as Yinzhou Binhai Incubation Center, Yinzhou Economic Development Zone is located in the southeast coastal area of Yinzhou District, Ningbo. The zone was launched in 2005, with a planned area of 15.02 square kilometers in two phases (6.44 square kilometers for phase I and 8.58 square kilometers for phase II). In December 2014, Yinzhou Economic Development Zone was approved to be the provincial economic development zone. As an important port-oriented zone for advanced manufacturing industries in our province, the zone aims to be a smart blue economic industrial park with an output of 100 billion.

Ningbo has been applying for the national-level Meishan New District including the development zone. The infrastructure, investment promotion, and supporting commercial facilities will be promoted further.



-  杭甬高速复线
Double line of Hangzhou-Ningbo Expressway
-  绕城高速
Ring Expressway
-  疏港高速
Port Expressway
-  1 沪甬跨海大桥
Shanghai-Ningbo Cross-Sea Bridge
-  2 嘉绍跨海大桥
Jiaxing-Shaoxing Cross-Sea Bridge
-  3 沪杭甬高速公路
Shanghai-Hangzhou-Ningbo Expressway
-  4 甬金高速公路
Ningbo-Jinhua Expressway
-  5 沈海高速公路
Shenyang-Haikou Expressway
-  6 沈海高速公路复线
Double line of Shenyang-Hankou Expressway

航空 Aviation

宁波栎社国际机场是长三角经济区四大国际机场之一。现有40多条国内航线，可直飞北京、上海、广州、香港和澳门等中国主要城市，另有国际航线直飞新加坡、曼谷等国外都市。旅客也可以利用宁波周边的萧山国际机场、上海虹桥机场和上海浦东国际机场等，便捷地往返与宁波和世界各地。

Ningbo Lishe international Airport is one of the four largest international airports in Yangtze River Delta. Now it has over 40 domestic lines which directly connect main cities in China like Beijing, Shanghai, Guangzhou, Hongkong and Macao. It also has international lines which directly connect foreign cities like Singapore and Bangkok. Passengers can conveniently travel to and fro between Ningbo and other places in the world via Xiaoshan International Airport, Shanghai Hongqiao Airport and Shanghai Pudong International Airport close to Ningbo.



公路 Road

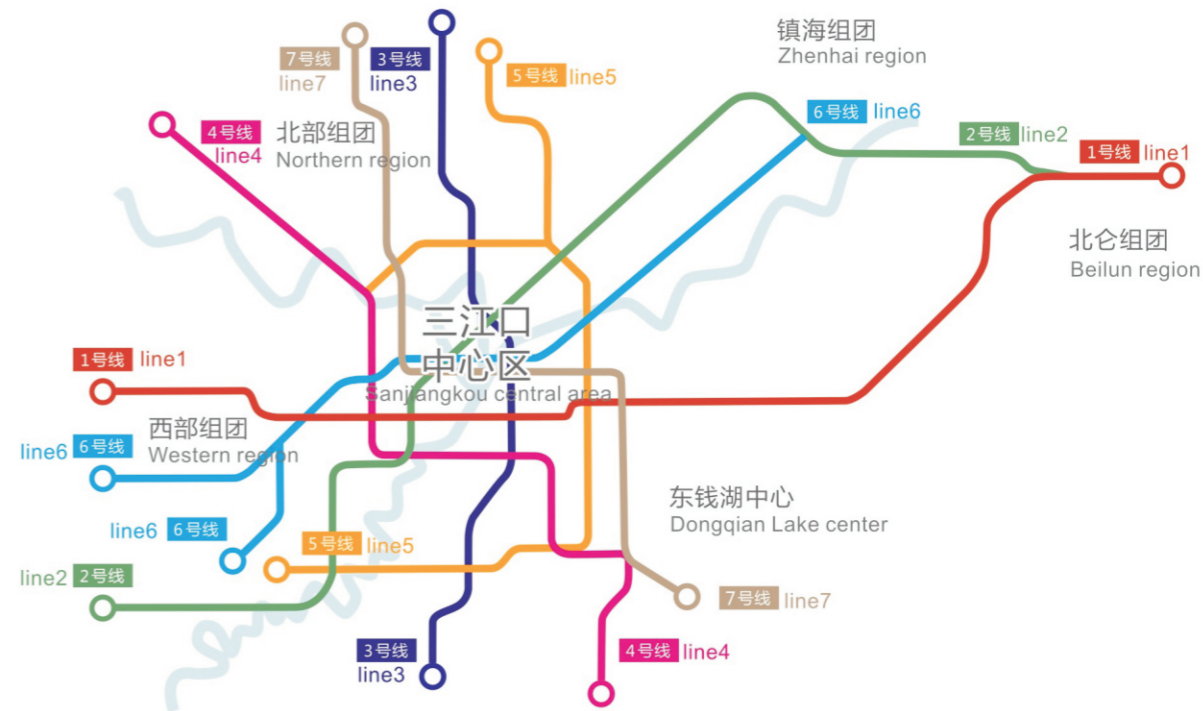
宁波是长三角公路交通运输网的重要枢纽。便捷地覆盖了整个长三角地区，两小时车程内可到达包括上海（距离208公里）、杭州（距离145公里）等在内的16个长三角重要城市。

Ningbo is an important hub in road transportation network of Yangtze River Delta. It takes within two hours to reach 16 important cities in Yangtze River Delta including Shanghai (208 km) and Hangzhou (145 km).

水运 Water transportation

宁波水路通航里程934.35公里。全长252公里的杭甬运河连接京杭运河，可通过300吨级船舶。目前，全市拥有各类船舶723艘，262.43万载重吨，5728客位，其中万吨级以上船舶67艘，167.08万载重吨。

Ningbo has a waterway of 934.35 km. Hangzhou-Ningbo Canal with an overall length of 252km connects Beijing-Hangzhou Canal. Ships of 300 tons can pass through it freely. At present, the whole city has 723 ships with 2.6243 million dwt and 5728 seats, including 67 ships of 10,000 tons with 1.6708 million dwt.



轨道交通 Rail transit

宁波市目前正在建设城市轨道系统，其中1号线于2014年启用，2号线2015年启用。横贯宁波东西方向，抵达北仑港。宁波最终将建成7条轨道交通线路。

Ningbo's urban light rails are under construction. Line 1 and Line 2 were put into use in 2014 and 2015 respectively. They run between the east and west, connecting downtown Ningbo with Beilun port. There will be 7 light rail lines altogether.

铁路 Railway

宁波的铁路客运网与中国其他主要城市联系紧密，每天有特快列车直达一些大城市，比如北京、上海和广州。2013年6月30日，杭甬高铁开通，宁波到杭州只需50分钟，到上海大约1个半小时。

Ningbo's railways conveniently connect with other major cities in China. Every day there are express trains bound for big cities like Beijing, Shanghai and Guangzhou. On June 30, 2013, Hangzhou-Ningbo High-Speed Rail was open to traffic. It only takes 50 minutes and 1.5 hours from Ningbo to Hangzhou and Shanghai respectively.

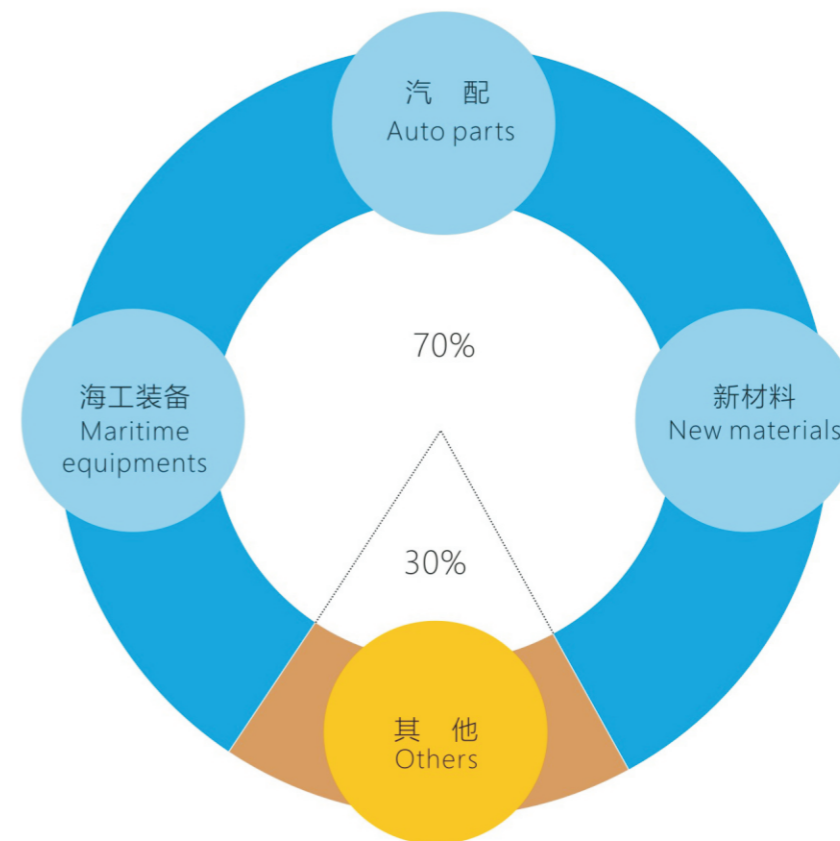




03 INDUSTRIES

产业

开发区已形成以海工装备、汽车零部件和新材料为主的产业结构。截止2016年底，开发区一期已有150个项目落户，建成投产项目140个，累计吸引投资逾160亿元，集聚就业人员2万余名，形成了百亿能级的产出规模。拥有年产值上亿企业31家，上10亿元企业3家，上市公司6家；拥有区级及以上企业技术研发中心62家，国家级高新技术企业18家。



The industrial structure focusing on maritime equipment, auto parts, and new materials has taken shape in the development zone. By the end of 2016, 150 projects have settled in phase I of the development zone, among which 140 projects have put into operation. An investment of over RMB 16 billion has been attracted accumulatively. Over 20 thousand employees work here. An overall output of around 20 billion has been realized. The development zone has 31 companies with an annual output of over RMB one hundred million and 3 companies with an annual output of over RMB 1 billion. Six listed companies have been attracted. The development zone has 62 R&D centers on district or above levels, and 18 state-level high and new technological companies.



特色产业与企业

Featured industries and enterprises

好的投资热土，是懂得创业气度的，它映衬着创业者的胸襟和涵养。宁波鄞州经济开发区所追求的正是这种境界，它不再是简单的盖楼租地，而是营造无论身处开发区的任一角落、任一空间格局，都能实现自身的成就，并分享彼此的喜悦。

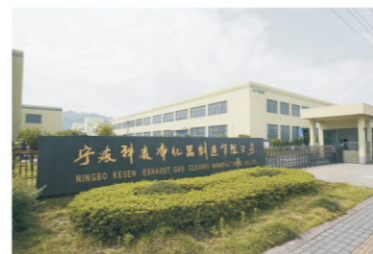
As a hot place for investment, Ningbo Yinzhou Economic Development Zone offers a wide platform for entrepreneurs with venturing spirit. It is far more than factory buildings. It is for self-value realization and joy sharing.



海工装备产业 Maritime equipment industry

骨干企业：
宁波新伟隆机械制造有限公司
宁波太平货柜有限公司
宁波中集物流装备有限公司
宁波威瑞泰默赛有限公司

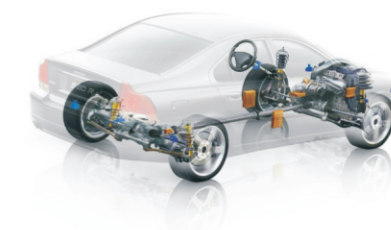
Key enterprises：
Ningbo Xinweilong Machine Manufacturing Co., Ltd.
Ningbo Pacific Container Co., Ltd.
Ningbo CIMC Logistics Equipment Co., Ltd.
Ningbo Veritas-MSI Co., Ltd.



汽车零部件产业 Auto parts industry

骨干企业：
浙江六和轻机械有限公司
宁波福士汽车零部件有限公司
宁波科森净化器制造有限公司

Key enterprises：
Zhejiang Lioho Light Metal Machinery Co., Ltd.
Ningbo Fushi Automotive Products Co., Ltd.
Ningbo Kesen Exhaust Gas Cleaner Manufacturing Co., Ltd.



新材料产业 New material industry

骨干企业：
宁波中淳高科桩业股份有限公司
宁波博威合金板带有限公司
宁波三邦超细纤维有限公司
宁波科星材料科技有限公司
宁波华宝石节能科技股份有限公司
宁波钛安新材料科技有限公司

Key enterprises：
Zcone High-tech Pile Industry Holdings Co., Ltd.
Ningbo Powerway Alloy Material Co., Ltd.
Ningbo Sanbang Superfine Fiber Co., Ltd.
Ningbo Co-Star Materials Hi-Tech Co., Ltd.
Ningbo Hobos Energy Conservation and Technology Co. Ltd.
Ningbo Tai'an New Material Technology Co., Ltd.



04 SUPPORTING FACILITIES

配套

(一) 生产配套。

宁波市鄞州经济开发区累计投入20亿元进行基础设施建设，七通一平全面配套，日供水2万吨自然水厂、2座110千伏变电站、日处理1万吨污水处理厂一应俱全，东海春晓油气田每年可向开发区供气3000万方。水深超8米的优质岸线规划建设1万吨级的工业码头。

(a) Production-supporting facilities.

Ningbo Yinzhou Economic Development Zone has accumulatively invested RMB 2 billion in the infrastructure. Water, power, roads, communications, sewage disposal, natural gas, etc, are all available. There are waterworks with a daily supply of 20,000 tons, two 110KV transformer substations and one sewage treatment plant with a daily handling capacity of 10,000 tons. Chunxiao Oil and Gas Field in the East China Sea can supply 30 million cubic meters of gas to the Development Zone every year. A 10,000 dwt industrial wharf under plan is to be built along the high-quality 8-meter-deep coastline.



幼儿园
kindergarten

(二) 生活配套。

开通连接轻轨站与开发区的公交专线，园区内设公交线路共7条，辐射周边乡镇及北仑与中心城区；建成人才公寓、文化广场、幼儿园、企业家活动中心、邻里中心、外来人口服务中心等各项生活配套，可以满足企业员工衣食住行学玩等全方位的生活需求。

(b) Living facilities.

A bus shuttle line between the light rail station and the development zone is to be put into use. Seven bus lines are available in the development zone, leading to towns nearby, Beilun District and city centers. Various living facilities such as talent apartments, cultural square, kindergarten, activity center for entrepreneurs, neighborhood center, and external population service center have been set up to meet comprehensive needs of company employees, including shopping, dining, housing, transportation, study and entertainment.





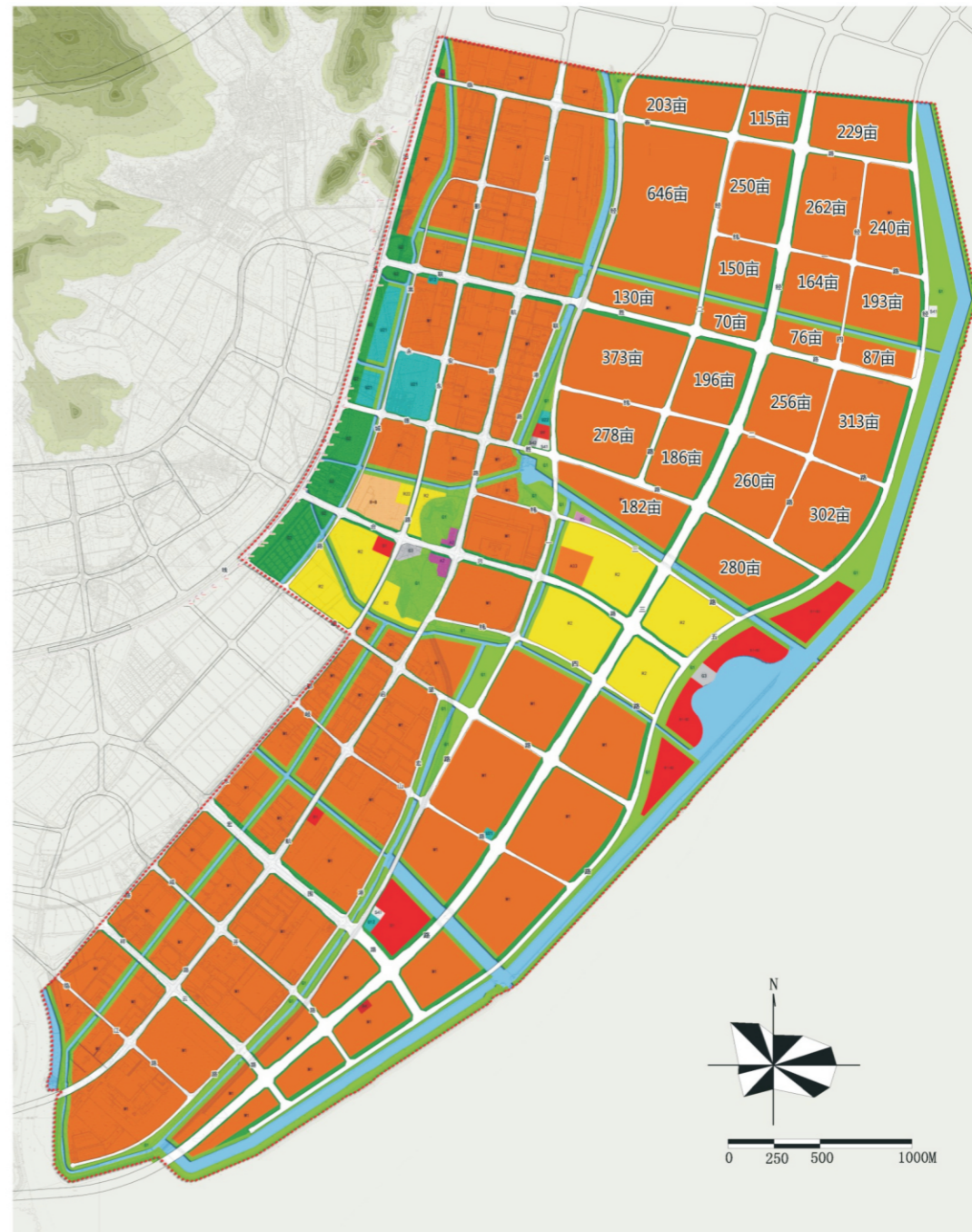
05 FUTURE 未来

宁波市鄞州经济开发区二期建设全面推进，规划用地1万多亩，重点引进海工装备、汽配、新材料等先进制造业。

总投20亿的PPP市政项目已进场施工，涵盖了8条道路、1个绿化和1个塘渣填筑。规划3000亩的汽配产业园正在全力开展招商，聚焦发展发动机、变速箱等核心零部件。

The construction of Phase II of Yinzhou Economic Development Zone is ongoing. On the planned 8.58 square kilometers, advanced manufacturing industries such as maritime equipment, auto parts and new materials will be developed as pillar industries.

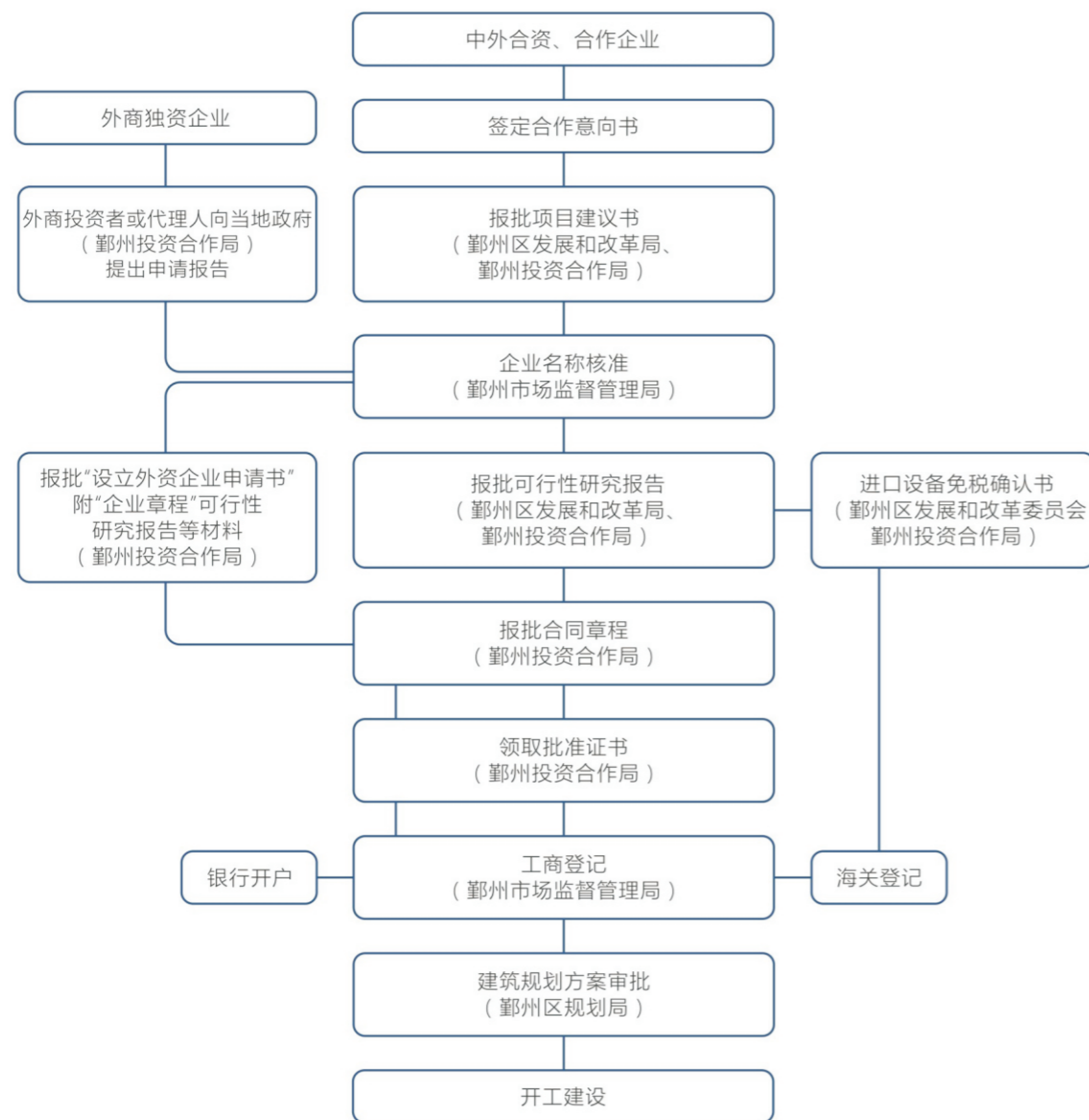
The PPP municipal projects with a total investment of RMB two billion were launched, covering eight roads, one green belt and one pond filling. A piece of 3000-mu land has been planned into an Auto Parts Industrial Park, which focuses on engines, gearboxes and other key parts.



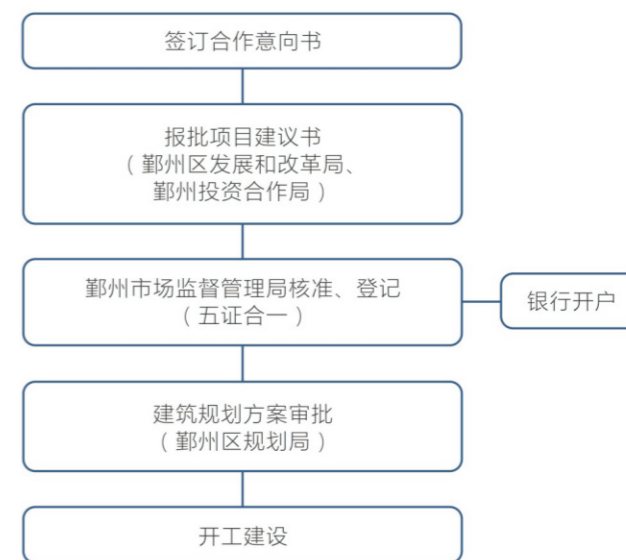
Y2	二类居住用地	B1	商业用地	M1	一类工业用地	U22	环卫用地	水域
B+R	商住用地	B2	商务用地	S41	公共交通场站用地	U31	消防用地	道路用地
A2	文化设施用地	B4	公共设施营业网点用地	S42	社会停车场用地	G1	公园绿地	规划范围
A33	中小学用地	B9	其他服务设施用地	U12	供电用地	G2	防护绿地	
A5	医疗卫生用地	B1-B2	综合用地	U22	排水用地	G3	广场用地	

附件

外商投资企业 投资程序

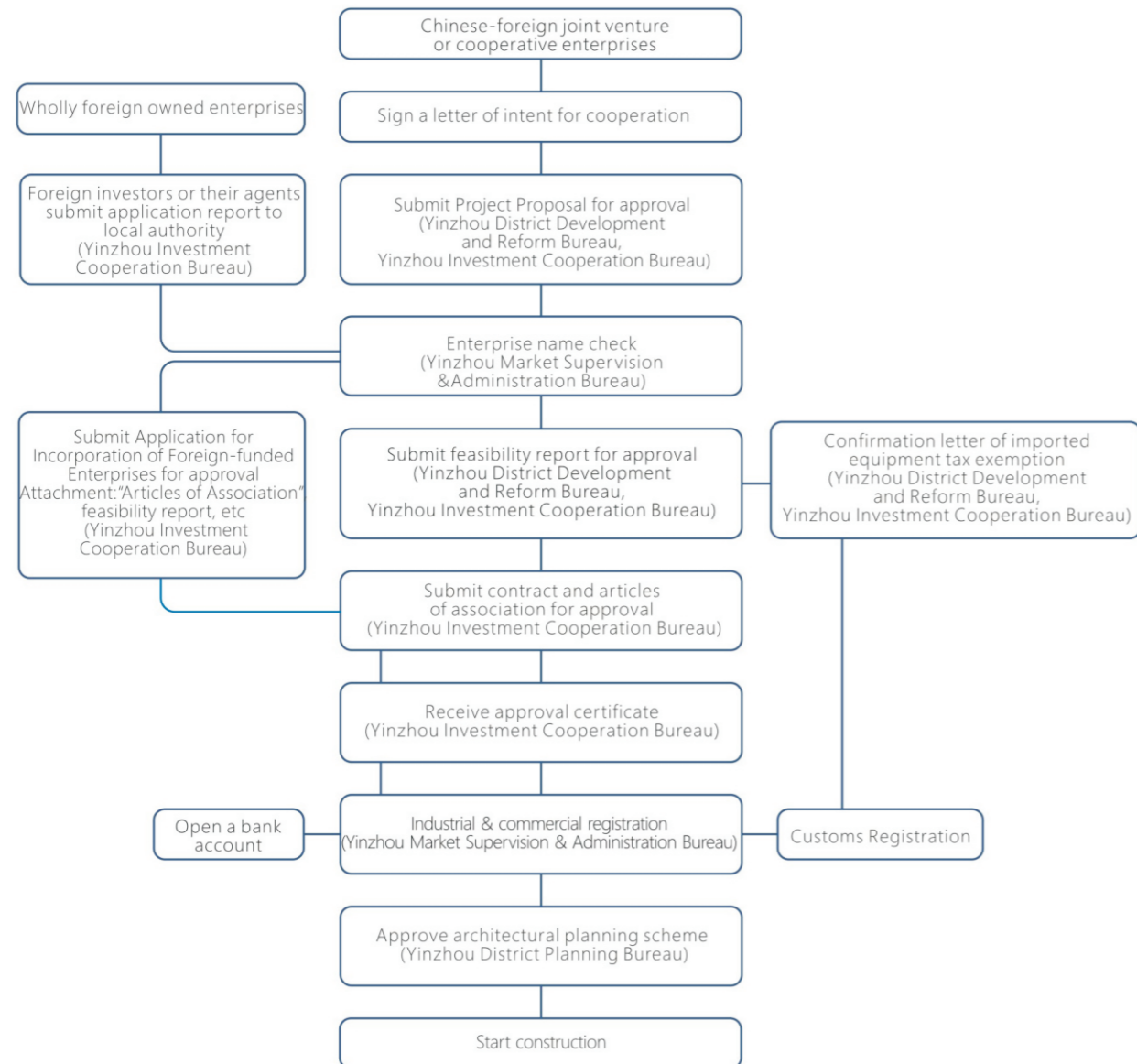


内资企业 投资程序

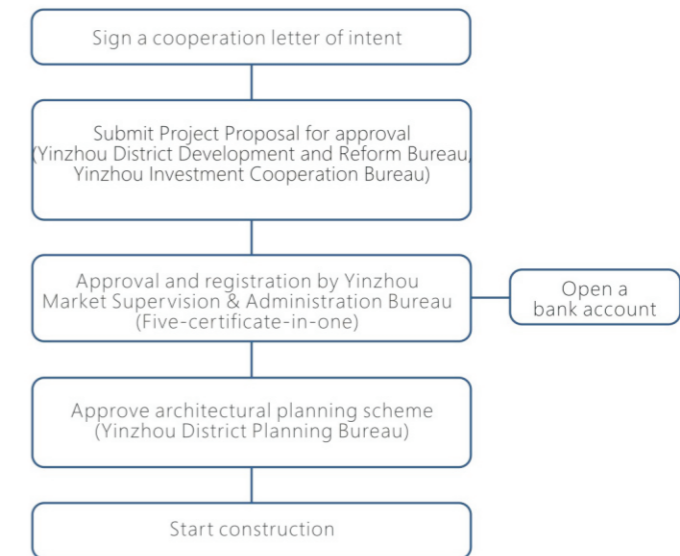


Attachment:

Investment procedures of foreign-invested enterprises



Domestic Enterprise Investment Procedure



公用事业费用

水费

单位:人民币/元/吨

类别		费用
居民生活		3.20
非居民生活	一般工商企业	6.12
	水环境影响较严重工业	6.92
特种行业		13.80

建筑

单位:人民币/元/平方米

厂房类别	费用(平均造价)	备注
单层轻钢结构厂房	800	基于1000平方米面积和8至15米高度标准
3-6层钢筋混凝土结构厂房	1200	基于1000平方米面积和4至5米高度标准
根据中国的现行法规,土地使用权需通过公开招标、拍卖或挂牌的方式取得		

劳动力

单位:人民币/元/月

时间	费用(平均月工资)	备注
2016	3000	企业还负担一定数额的社会福利费用
社会福利包括养老保险、医疗保险、住房公积金、生育保险、工伤保险和失业保险		

天然气

单位:人民币/元/立方米

公司	费用(不含安装费)
宁波市鄞州滨海燃气发展有限公司	3.42

电费

大工业用电

单位:人民币/元/千瓦时

电压等级	电度电价	分时电价			基本电价	
		尖峰电值	高峰电值	低谷电值	变压器容量 (元/千伏安·月)	最大需量 (元/千瓦·月)
1-10千伏	0.6966	1.1146	0.9326	0.4486	30	40
20千伏	0.6766	1.0893	0.9093	0.4326	30	40
35千伏	0.6666	1.0766	0.8976	0.4246	30	40
110千伏	0.6446	1.0436	0.8686	0.4046	30	40
220千伏及以上	0.6396	1.0336	0.8606	0.4006	30	40

一般工商业用电及其他用电

单位:人民币/元/千瓦时

电压等级	电度电价	分时电价		
		尖峰电值	高峰电值	低谷电值
不满1千伏	0.8929	1.4029	1.0979	0.5749
1-10千伏	0.8549	1.3529	1.0549	0.5429
20千伏	0.8349	1.3269	1.0322	0.5262
35千伏及以上	0.8249	1.3139	1.0209	0.5179

注:大工业用电、一般工商业及其他用电六时段分时电价时段划分:

尖峰时段19:00-21:00

高峰时段8:00-11:00、13:00-19:00、21:00-22:00

低谷时段11:00-13:00、22:00-次日8:00

Public Utilities Charges

Water

Unit: RMB per ton

Category		Charges
Water for living		3.20
Water for non-living	General industrial and commercial enterprises	6.12
	Industries which have severe impact upon water environment	6.92
Special Industries		13.80

Buildings

Unit: RMB/m²

Categories of Factory Building	Expenditure (average cost)	Remarks
Single-storeyed light steel structure	800	Based on 1,000-m ² area and 8~15-m height
3~6-storeyed reinforced concrete structure	1200	Based on 1,000-m ² area and 4~5-m height
According to China's current laws and regulations, the land use right should be obtained through public bidding or auction.		

Labor cost

Unit: RMB/month

Year	Cost (monthly salary on average)	Remarks
2016	3000	Enterprises shall also bear social welfare charges
Social welfares include old age pensions, medical insurance, housing fund, maternity insurance, injury insurance and unemployment insurance.		

Natural Gas

Unit: RMB/m³

Company	Expenses (excluding installation)
Ningbo Yinzhou Binhai Gas Development Co., Ltd.	3.42

Electricity Charges

Electricity consumption by large-scaled industry

Unit: RMB/kwh

Voltage Class	Price/kwh	Time Pricing			Basic price	
		Peak Price	Busy Hour Price	Valley Price	Transformer Capacity (RMB/KVA·m)	Max. Demand (RMB/kwh·m)
1-10kV	0.6966	1.1146	0.9326	0.4486	30	40
20kV	0.6766	1.0893	0.9093	0.4326	30	40
35kV	0.6666	1.0766	0.8976	0.4246	30	40
110kV	0.6446	1.0436	0.8686	0.4046	30	40
220kV and above	0.6396	1.0336	0.8606	0.4006	30	40

Electricity for general manufacturing and commercial industries or others

Unit: RMB/kwh

Voltage Class	Price/kwh	Time Pricing		
		Peak Price	Busy Hour Price	Valley Price
Less than 1 kV	0.8929	1.4029	1.0979	0.5749
1-10kV	0.8549	1.3529	1.0549	0.5429
20kV	0.8349	1.3269	1.0322	0.5262
35kV and above	0.8249	1.3139	1.0209	0.5179

Notes: six periods of time pricing for large-scaled industries, general manufacturing and commercial industries and others.

Peak : 19:00~21:00

Busy hour : 08:00~11:00, 13:00~19:00 and 21:00~22:00

Valley: 11:30~13:00 and 22:00- 08:00